



# Economic Overview

## Haskell, TX

**Prepared for Development Corporation of Haskell.**

**February 2, 2024**



Workforce Solutions of West Central Texas  
[www.WFSWCT.org](http://www.WFSWCT.org)  
325-795-4310

Demographic Profile..... 3

Employment Trends ..... 5

Wage Trends..... 6

Cost of Living Index..... 7

Industry Snapshot..... 8

Occupation Snapshot ..... 10

Industry Clusters..... 12

Education Levels..... 13

Haskell city, TX Regional Map..... 14

Region Definition..... 15

FAQ..... 16

# Demographic Profile

The population in the Haskell city, TX was 3,013 per American Community Survey data for 2017-2021.

The region has a civilian labor force of 1,324 with a participation rate of 51.2%. Of individuals 25 to 64 in the Haskell city, TX, 17.4% have a bachelor's degree or higher which compares with 35.1% in the nation.

The median household income in the Haskell city, TX is \$53,651 and the median house value is \$54,100.

## Summary<sup>1</sup>

	Percent			Value		
	Haskell city, TX	West Central WDA	Texas	Haskell city, TX	West Central WDA	Texas
<b>Demographics</b>						
Population (ACS)	—	—	—	3,013	331,228	28,862,581
Male	55.9%	51.1%	49.9%	1,684	169,260	14,398,171
Female	44.1%	48.9%	50.1%	1,329	161,968	14,464,410
Median Age <sup>2</sup>	—	—	—	41.5	37.3	35.0
Under 18 Years	16.2%	23.4%	25.8%	489	77,571	7,446,176
18 to 24 Years	13.1%	11.1%	9.7%	395	36,733	2,796,936
25 to 34 Years	12.5%	13.0%	14.5%	378	43,069	4,180,029
35 to 44 Years	13.7%	11.9%	13.8%	414	39,296	3,979,307
45 to 54 Years	9.4%	10.9%	12.4%	282	36,164	3,575,796
55 to 64 Years	14.4%	12.4%	11.3%	434	40,931	3,263,539
65 to 74 Years	10.5%	9.8%	7.7%	317	32,563	2,233,217
75 Years and Over	10.1%	7.5%	4.8%	304	24,901	1,387,581
Race: White	81.4%	78.7%	64.3%	2,454	260,686	18,566,027
Race: Black or African American	6.3%	5.7%	12.1%	190	18,837	3,499,862
Race: American Indian and Alaska Native	0.0%	0.4%	0.5%	0	1,271	147,892
Race: Asian	0.0%	1.3%	5.0%	0	4,202	1,452,713
Race: Native Hawaiian and Other Pacific Islander	0.0%	0.0%	0.1%	0	62	24,608
Race: Some Other Race	8.5%	5.8%	7.0%	255	19,089	2,019,394
Race: Two or More Races	3.8%	8.2%	10.9%	114	27,081	3,152,085
Hispanic or Latino (of any race)	31.0%	26.3%	39.8%	933	86,994	11,479,932
<b>Economic</b>						
Labor Force Participation Rate and Size (civilian population 16 years and over)	51.2%	58.4%	64.9%	1,324	150,669	14,390,216
Prime-Age Labor Force Participation Rate and Size (civilian population 25-54)	63.0%	75.3%	81.3%	677	87,639	9,491,638
Armed Forces Labor Force	0.0%	1.6%	0.5%	0	4,245	102,600
Veterans, Age 18-64	4.2%	6.1%	4.8%	79	11,743	841,980
Veterans Labor Force Participation Rate and Size, Age 18-64	78.5%	75.3%	78.8%	62	8,842	663,239
Median Household Income <sup>2</sup>	—	—	—	\$53,651	\$53,718	\$67,321
Per Capita Income	—	—	—	\$42,535	\$27,912	\$34,255
Mean Commute Time (minutes)	—	—	—	17.1	19.1	26.6
Commute via Public Transportation	0.0%	0.2%	1.1%	0	339	152,475
<b>Educational Attainment, Age 25-64</b>						
No High School Diploma	22.1%	12.3%	14.3%	333	19,603	2,140,415
High School Graduate	43.9%	32.5%	24.2%	662	51,860	3,628,137
Some College, No Degree	12.3%	24.3%	21.3%	186	38,733	3,190,758
Associate's Degree	4.2%	8.9%	7.9%	64	14,182	1,182,642
Bachelor's Degree	7.4%	15.3%	21.3%	112	24,477	3,189,631
Postgraduate Degree	10.0%	6.7%	11.1%	151	10,605	1,667,088
<b>Housing</b>						
Total Housing Units	—	—	—	1,367	152,216	11,433,880

## Summary<sup>1</sup>

	Percent			Value		
	Haskell city, TX	West Central WDA	Texas	Haskell city, TX	West Central WDA	Texas
Median House Value (of owner-occupied units) <sup>2</sup>	—	—	—	\$54,100	\$113,297	\$202,600
Homeowner Vacancy	6.5%	2.0%	1.3%	46	1,773	85,038
Rental Vacancy	11.4%	5.5%	7.6%	52	2,273	320,865
Renter-Occupied Housing Units (% of Occupied Units)	37.8%	31.5%	37.6%	404	38,520	3,848,280
Occupied Housing Units with No Vehicle Available (% of Occupied Units)	5.9%	5.0%	5.2%	63	6,111	533,515
<b>Social</b>						
Poverty Level (of all people)	9.1%	13.7%	14.0%	247	42,671	3,965,117
Households Receiving Food Stamps/SNAP	21.5%	11.9%	11.5%	230	14,564	1,178,059
Enrolled in Grade 12 (% of total population)	5.0%	1.6%	1.5%	151	5,360	421,868
Disconnected Youth <sup>3</sup>	2.3%	4.4%	2.9%	8	841	48,045
Children in Single Parent Families (% of all children)	40.3%	33.4%	34.0%	181	23,769	2,410,770
Uninsured	21.9%	16.2%	17.6%	594	50,898	4,995,381
With a Disability, Age 18-64	22.4%	13.8%	9.5%	368	24,933	1,651,720
With a Disability, Age 18-64, Labor Force Participation Rate and Size	37.8%	46.9%	48.0%	139	11,704	792,979
Foreign Born	5.2%	5.7%	17.0%	158	18,778	4,904,169
Speak English Less Than Very Well (population 5 yrs and over)	8.6%	4.6%	13.1%	253	14,240	3,532,172

Source: [JobsEQ®](#)

1. American Community Survey 2017-2021, unless noted otherwise

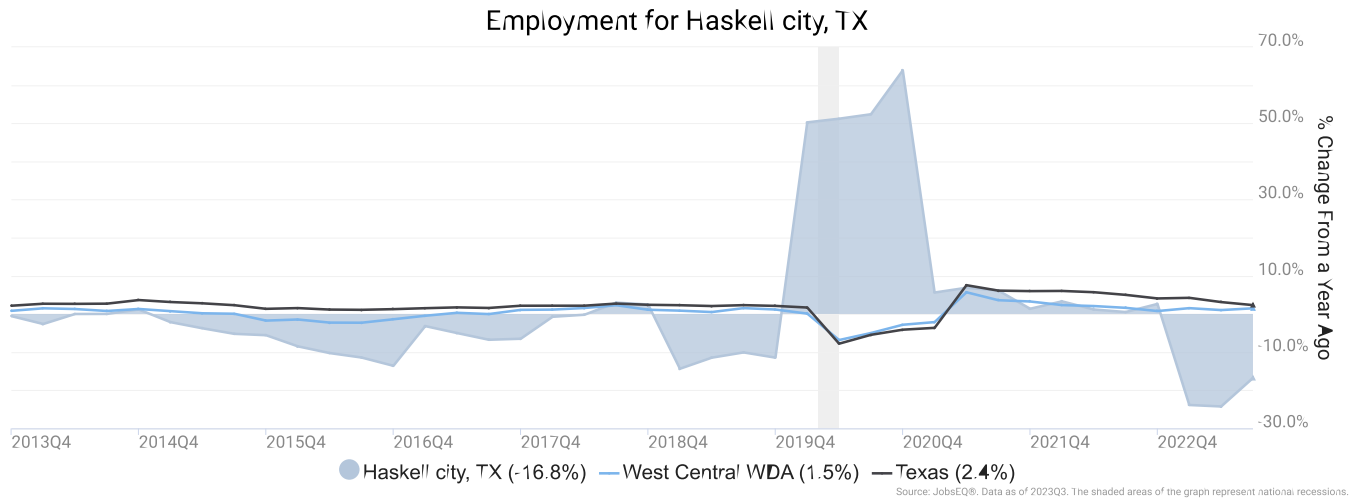
2. Median values for certain aggregate regions (such as MSAs) may be estimated as the weighted averages of the median values from the composing counties.

3. Disconnected Youth are 16-19 year olds who are (1) not in school, (2) not high school graduates, and (3) either unemployed or not in the labor force.

4. Census Population Estimate for 2022, annual average growth rate since 2012. Post-2019 data for Connecticut counties are imputed by Chmura.

# Employment Trends

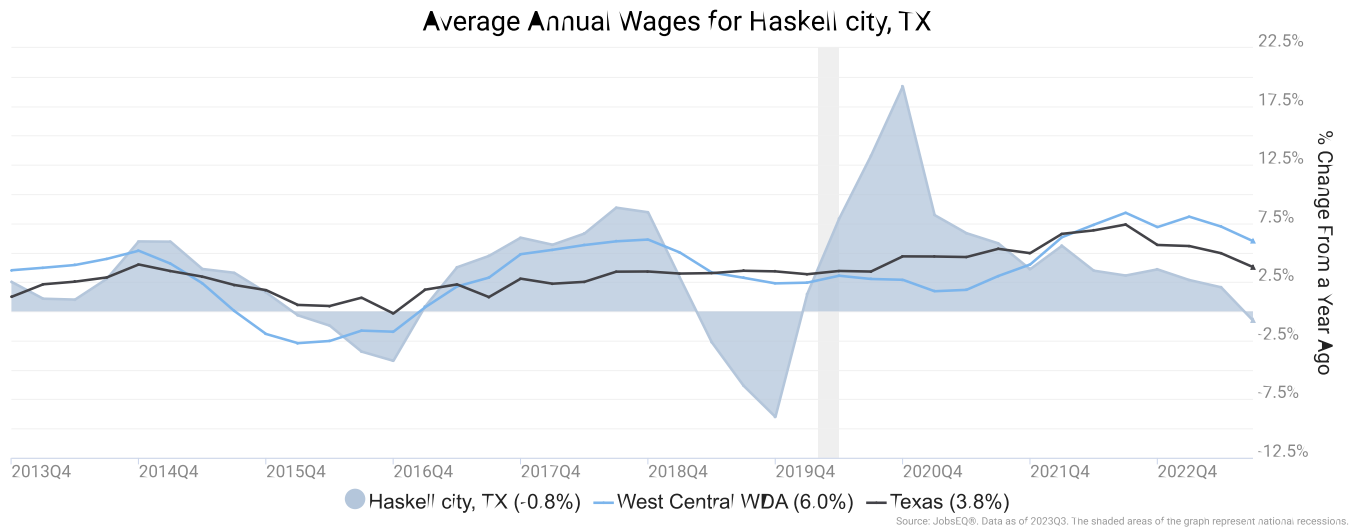
As of 2023Q3, total employment for the Haskell city, TX was 1,380 (based on a four-quarter moving average). Over the year ending 2023Q3, employment declined 16.8% in the region.



Employment data are derived from the Quarterly Census of Employment and Wages, provided by the Bureau of Labor Statistics and imputed where necessary. Data are updated through 2023Q2 with preliminary estimates updated to 2023Q3.

# Wage Trends

The average worker in the Haskell city, TX earned annual wages of \$40,824 as of 2023Q3. Average annual wages per worker decreased 0.8% in the region over the preceding four quarters. For comparison purposes, annual average wages were \$70,183 in the nation as of 2023Q3.



Annual average wages per worker data are derived from the Quarterly Census of Employment and Wages, provided by the Bureau of Labor Statistics and imputed where necessary. Data are updated through 2023Q2 with preliminary estimates updated to 2023Q3.

# Cost of Living Index

The Cost of Living Index estimates the relative price levels for consumer goods and services. When applied to wages and salaries, the result is a measure of relative purchasing power. The cost of living is 18.0% lower in Haskell city, TX than the U.S. average.

## Cost of Living Information

	Annual Average Salary	Cost of Living Index (Base US)	US Purchasing Power
Haskell city, TX	\$40,824	82.0	\$49,805
West Central WDA	\$50,166	88.6	\$56,607
Texas	\$69,661	94.2	\$73,930
USA	\$70,183	100.0	\$70,183

Source: [JobsEQ®](#)

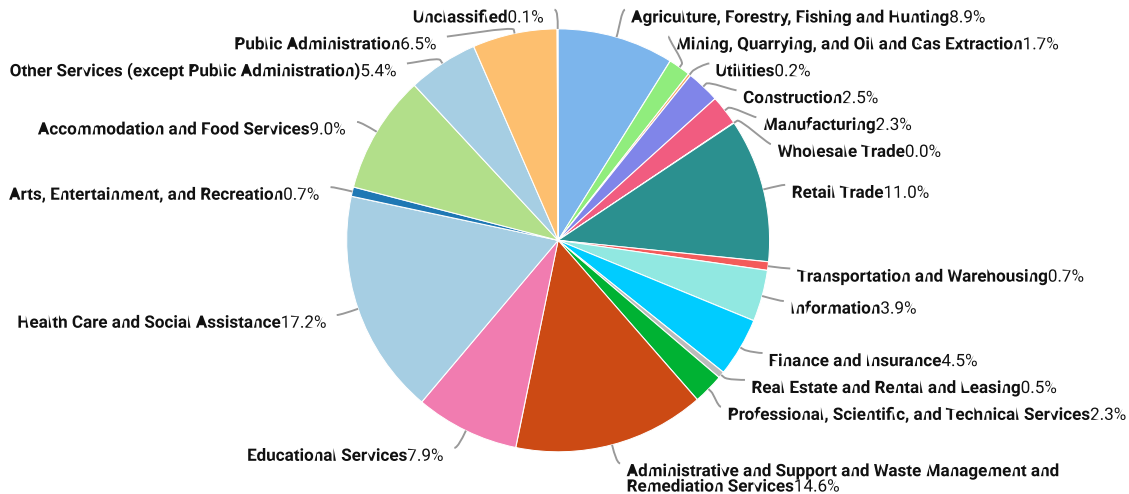
Data as of 2023Q3

Cost of Living per [COLI](#), data as of 2023Q3, imputed by Chmura where necessary.

# Industry Snapshot

The largest sector in the Haskell city, TX is Health Care and Social Assistance, employing 237 workers. The next-largest sectors in the region are Administrative and Support and Waste Management and Remediation Services (202 workers) and Retail Trade (151). High location quotients (LQs) indicate sectors in which a region has high concentrations of employment compared to the national average. The sectors with the largest LQs in the region are Agriculture, Forestry, Fishing and Hunting (LQ = 7.01), Mining, Quarrying, and Oil and Gas Extraction (4.67), and Administrative and Support and Waste Management and Remediation Services (2.32).

Total Workers for Haskell city, TX by Industry



Source: JobsEQ®. Data as of 2023Q3

Employment data are derived from the Quarterly Census of Employment and Wages, provided by the Bureau of Labor Statistics and imputed where necessary. Data are updated through 2023Q2 with preliminary estimates updated to 2023Q3.

Sectors in the Haskell city, TX with the highest average wages per worker are Administrative and Support and Waste Management and Remediation Services (\$217,410), Utilities (\$60,307), and Finance and Insurance (\$58,515). Regional sectors with the best job growth (or most moderate job losses) over the last 5 years are Administrative and Support and Waste Management and Remediation Services (+136 jobs), Health Care and Social Assistance (+55), and Information (+49).

Over the next 1 year, employment in the Haskell city, TX is projected to contract by 9 jobs. The fastest growing sector in the region is expected to be Administrative and Support and Waste Management and Remediation Services with a +0.2% year-over-year rate of growth. The strongest forecast by number of jobs over this period is expected for Administrative and Support and Waste Management and Remediation Services (0 jobs), Other Services (except Public Administration) (0), and Finance and Insurance (0).



### Haskell city, TX, 2023Q3<sup>1</sup>

NAICS	Industry	Current			5-Year History		1-Year Forecast				
		Empl	Avg Ann Wages	LQ	Empl Change	Ann %	Total Demand	Exits	Transfers	Empl Growth	Ann % Growth
62	Health Care and Social Assistance	237	\$45,737	1.18	55	5.5%	22	11	12	-1	-0.3%
56	Administrative and Support and Waste Management and Remediation Services	202	\$217,410	2.32	136	25.1%	24	10	13	0	0.2%
44	Retail Trade	151	\$33,489	1.11	-22	-2.7%	19	9	12	-2	-1.1%
72	Accommodation and Food Services	125	\$16,015	1.04	36	7.1%	21	10	12	-1	-0.7%
11	Agriculture, Forestry, Fishing and Hunting	123	\$41,247	7.01	10	1.6%	13	7	7	-2	-1.2%
61	Educational Services	110	\$47,119	1.00	-13	-2.2%	8	5	5	-2	-2.1%
92	Public Administration	89	\$42,737	1.41	-3	-0.6%	8	4	5	-1	-0.7%
81	Other Services (except Public Administration)	74	\$22,326	1.26	4	1.1%	8	4	5	0	-0.6%
52	Finance and Insurance	62	\$58,515	1.13	15	5.7%	5	2	3	0	-0.6%
51	Information	54	\$51,480	1.97	49	60.2%	4	2	3	0	-0.9%
23	Construction	35	\$38,222	0.43	-7	-3.4%	3	1	2	0	-0.7%
31	Manufacturing	32	\$41,129	0.29	8	5.6%	3	1	2	0	-1.1%
54	Professional, Scientific, and Technical Services	32	\$47,292	0.32	9	7.2%	3	1	2	0	0.1%
21	Mining, Quarrying, and Oil and Gas Extraction	23	\$42,842	4.67	-13	-8.4%	2	1	1	0	-0.6%
71	Arts, Entertainment, and Recreation	10	\$18,397	0.36	7	32.6%	1	1	1	0	-0.2%
48	Transportation and Warehousing	9	\$57,034	0.13	2	5.9%	1	0	1	0	-0.5%
53	Real Estate and Rental and Leasing	7	\$35,875	0.29	1	1.6%	1	0	0	0	-0.4%
22	Utilities	3	\$60,307	0.37	-8	-24.5%	0	0	0	0	-1.2%
99	Unclassified	1	\$27,261	0.30	0	-5.6%	0	0	0	0	-0.8%
42	Wholesale Trade	0	n/a	0.00	-7	n/a	0	0	0	0	-1.9%
55	Management of Companies and Enterprises	0	n/a	0.00	-2	n/a	0	0	0	0	
<b>Total - All Industries</b>		<b>1,380</b>	<b>\$40,824</b>	<b>1.00</b>	<b>259</b>	<b>4.2%</b>	<b>141</b>	<b>66</b>	<b>84</b>	<b>-9</b>	<b>-0.7%</b>

Source: [JobsEQ®](#)

Data as of 2023Q3

Note: Figures may not sum due to rounding.

1. All data based upon a four-quarter moving average.

Exits and transfers are approximate estimates based upon occupation separation rates.

Employment data are derived from the Quarterly Census of Employment and Wages, provided by the Bureau of Labor Statistics and imputed where necessary. Data are updated through 2023Q2 with preliminary estimates updated to 2023Q3. Forecast employment growth uses national projections adapted for regional growth patterns.

# Occupation Snapshot

The largest major occupation group in the Haskell city, TX is Management Occupations, employing 166 workers. The next-largest occupation groups in the region are Office and Administrative Support Occupations (150 workers) and Sales and Related Occupations (112). High location quotients (LQs) indicate occupation groups in which a region has high concentrations of employment compared to the national average. The major groups with the largest LQs in the region are Farming, Fishing, and Forestry Occupations (LQ = 3.39), Protective Service Occupations (2.43), and Building and Grounds Cleaning and Maintenance Occupations (1.83).

Occupation groups in the Haskell city, TX with the highest average wages per worker are Legal Occupations (\$108,800), Architecture and Engineering Occupations (\$84,500), and Management Occupations (\$80,200). The unemployment rate in the region varied among the major groups from 1.1% among Management Occupations to 5.7% among Food Preparation and Serving Related Occupations.

Over the next 1 year, the fastest growing occupation group in the Haskell city, TX is expected to be Community and Social Service Occupations with a +0.2% year-over-year rate of growth. The strongest forecast by number of jobs over this period is expected for Healthcare Practitioners and Technical Occupations (0 jobs) and Building and Grounds Cleaning and Maintenance Occupations (0). Over the same period, the highest separation demand (occupation demand due to retirements and workers moving from one occupation to another) is expected in Food Preparation and Serving Related Occupations (20 jobs) and Office and Administrative Support Occupations (17).

Haskell city, TX, 2023Q3<sup>1</sup>

SOC	Occupation	Current						5-Year History		1-Year Forecast				
		Empl	Mean Ann Wages <sup>2</sup>	LQ	Unempl	Unempl Rate	Online Job Ads	Empl Change	Ann %	Total Demand	Exits	Transfers	Empl Growth	Ann % Growth
11-0000	Management	166	\$80,200	1.60	2	1.1%	n/a	29	3.9%	13	7	7	-1	-0.8%
43-0000	Office and Administrative Support	150	\$37,100	0.90	4	3.2%	n/a	30	4.6%	14	8	9	-2	-1.4%
41-0000	Sales and Related	112	\$34,500	0.91	6	4.7%	n/a	-6	-1.0%	13	7	8	-1	-1.2%
35-0000	Food Preparation and Serving Related	106	\$25,200	0.95	7	5.7%	n/a	20	4.3%	19	9	11	-1	-0.7%
29-0000	Healthcare Practitioners and Technical	98	\$74,100	1.22	1	1.4%	n/a	26	6.5%	5	3	2	0	-0.4%
37-0000	Building and Grounds Cleaning and Maintenance	83	\$29,000	1.83	4	4.9%	n/a	37	12.8%	11	5	6	0	-0.1%
53-0000	Transportation and Material Moving	82	\$36,400	0.67	7	5.1%	n/a	20	5.8%	10	4	6	0	-0.2%
25-0000	Educational Instruction and Library	75	\$45,200	1.03	3	2.4%	n/a	-8	-2.1%	5	3	3	-1	-1.8%
49-0000	Installation, Maintenance, and Repair	74	\$45,500	1.38	2	2.1%	n/a	28	9.8%	6	3	4	0	-0.2%
33-0000	Protective Service	72	\$42,200	2.43	2	3.3%	n/a	25	8.7%	6	3	4	-1	-0.9%
31-0000	Healthcare Support	61	\$28,200	1.00	2	3.7%	n/a	4	1.5%	8	4	4	0	-0.1%
13-0000	Business and Financial Operations	59	\$67,400	0.67	1	1.9%	n/a	19	8.0%	4	2	3	0	-0.3%
47-0000	Construction and Extraction	44	\$44,000	0.70	5	4.5%	n/a	-4	-1.8%	4	1	2	0	-0.4%
39-0000	Personal Care and Service	42	\$29,200	1.22	1	3.5%	n/a	13	8.0%	7	3	4	0	-0.1%
51-0000	Production	42	\$41,900	0.55	3	4.3%	n/a	7	3.4%	4	2	3	0	-1.1%
45-0000	Farming, Fishing, and Forestry	28	\$30,100	3.39	3	5.5%	n/a	2	1.6%	4	2	2	0	-1.0%
15-0000	Computer and Mathematical	27	\$79,400	0.62	0	n/a	n/a	13	14.0%	2	1	1	0	0.1%
21-0000	Community and Social Service	24	\$45,400	0.95	1	2.1%	n/a	5	5.4%	2	1	1	0	0.2%

### Haskell city, TX, 2023Q3<sup>1</sup>

SOC	Occupation	Current				5-Year History				1-Year Forecast				
		Empl	Mean Ann Wages <sup>2</sup>	LQ	Unempl	Unempl Rate	Online Job Ads	Empl Change	Ann %	Total Demand	Exits	Transfers	Empl Growth	Ann % Growth
17-0000	Architecture and Engineering	10	\$84,500	0.45	0	n/a	n/a	2	3.5%	1	0	0	0	0.1%
27-0000	Arts, Design, Entertainment, Sports, and Media	10	\$47,600	0.41	0	n/a	n/a	1	1.1%	1	0	1	0	-0.4%
19-0000	Life, Physical, and Social Science	7	\$64,700	0.57	0	n/a	n/a	0	1.2%	1	0	0	0	-0.2%
23-0000	Legal	6	\$108,800	0.55	0	n/a	n/a	-1	-1.6%	0	0	0	0	-0.3%
<b>Total - All Occupations</b>		<b>1,380</b>	<b>\$47,000</b>	<b>1.00</b>	<b>n/a</b>	<b>n/a</b>	<b>n/a</b>	<b>264</b>	<b>4.3%</b>	<b>139</b>	<b>68</b>	<b>81</b>	<b>-9</b>	<b>-0.7%</b>

Source: [JobsEQ®](#)

Data as of 2023Q3 unless noted otherwise

Note: Figures may not sum due to rounding.

1. Data based on a four-quarter moving average unless noted otherwise.

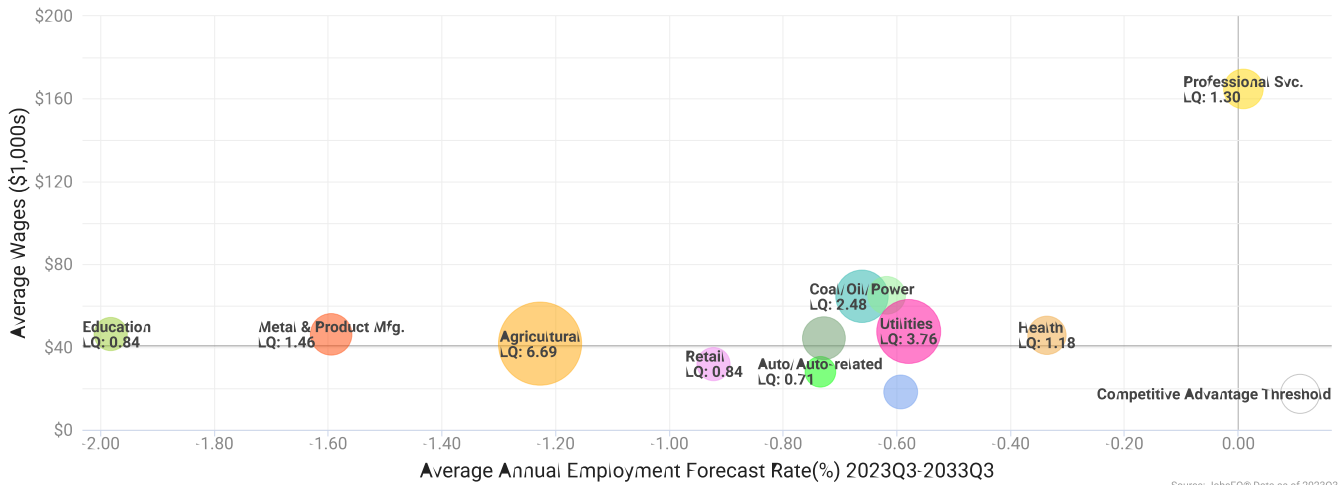
2. Wage data represent the average for all Covered Employment

Occupation employment data are estimated via industry employment data and the estimated industry/occupation mix. Industry employment data are derived from the Quarterly Census of Employment and Wages, provided by the Bureau of Labor Statistics and currently updated through 2023Q2, imputed where necessary with preliminary estimates updated to 2023Q3. Wages by occupation are as of 2023 provided by the BLS and imputed where necessary. Forecast employment growth uses national projections from the Bureau of Labor Statistics adapted for regional growth patterns.

# Industry Clusters

A cluster is a geographic concentration of interrelated industries or occupations. The industry cluster in the Haskell city, TX with the highest relative concentration is Agricultural with a location quotient of 6.69. This cluster employs 123 workers in the region with an average wage of \$41,667. Employment in the Agricultural cluster is projected to contract in the region about 1.2% per year over the next ten years.

Industry Clusters for Haskell city, TX as of 2023Q3



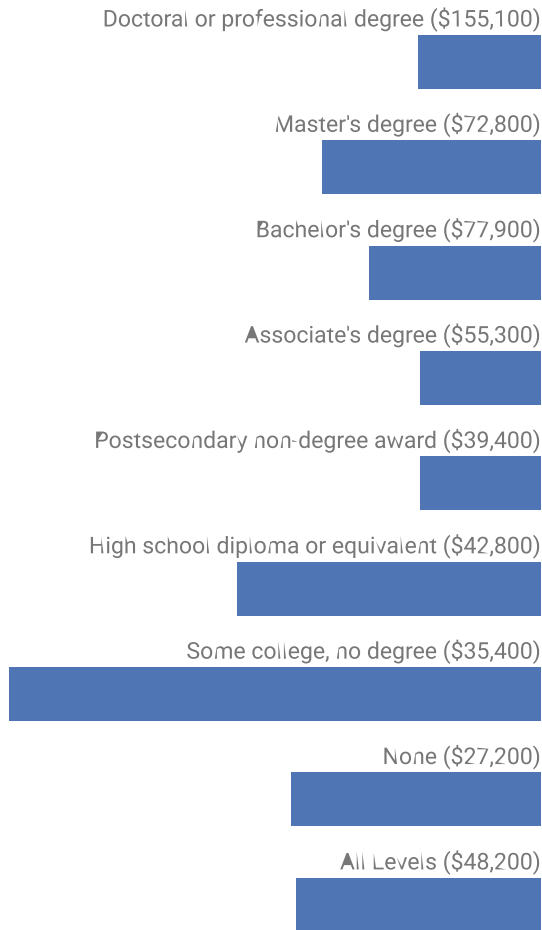
Source: JobsEQ®, Data as of 2023Q3

Location quotient and average wage data are derived from the Quarterly Census of Employment and Wages, provided by the Bureau of Labor Statistics, imputed where necessary, and updated through 2023Q2 with preliminary estimates updated to 2023Q3. Forecast employment growth uses national projections from the Bureau of Labor Statistics adapted for regional growth patterns.

# Education Levels

Expected growth rates for occupations vary by the education and training required. While all employment in the Haskell city, TX is projected to contract 0.7% over the next ten years, occupations typically requiring a postgraduate degree are expected to contract 0.3% per year, those requiring a bachelor's degree are forecast to contract 0.5% per year, and occupations typically needing a 2-year degree or certificate are expected to contract 0.3% per year.

## Annual Average Projected Job Growth by Education Levels



Source: JobsEQ®  
Data as of 2023Q3

Employment by occupation data are estimates as of 2023Q3. Education levels of occupations are based on BLS assignments. Forecast employment growth uses national projections from the Bureau of Labor Statistics adapted for regional growth patterns.

# Haskell city, TX Regional Map



# Region Definition

**West Central WDA is defined as the following counties:**

Brown County, Texas

---

Callahan County, Texas

---

Coleman County, Texas

---

Comanche County, Texas

---

Eastland County, Texas

---

Fisher County, Texas

---

Haskell County, Texas

---

Jones County, Texas

---

Kent County, Texas

---

Knox County, Texas

---

Mitchell County, Texas

---

Nolan County, Texas

---

Runnels County, Texas

---

Scurry County, Texas

---

Shackelford County, Texas

---

Stephens County, Texas

---

Stonewall County, Texas

---

Taylor County, Texas

---

Throckmorton County, Texas

---

# FAQ

## What is a location quotient?

A location quotient (LQ) is a measurement of concentration in comparison to the nation. An LQ of 1.00 indicates a region has the same concentration of an industry (or occupation) as the nation. An LQ of 2.00 would mean the region has twice the expected employment compared to the nation and an LQ of 0.50 would mean the region has half the expected employment in comparison to the nation.

## What is separation demand?

Separation demand is the number of jobs required due to separations—labor force exits (including retirements) and turnover resulting from workers moving from one occupation into another. Note that separation demand does not include all turnover—it does not include when workers stay in the same occupation but switch employers. The total projected demand for an occupation is the sum of the separation demand and the growth demand (which is the increase or decrease of jobs in an occupation expected due to expansion or contraction of the overall number of jobs in that occupation).

## What is a cluster?

A cluster is a geographic concentration of interrelated industries or occupations. If a regional cluster has a location quotient of 1.25 or greater, the region is considered to possess a competitive advantage in that cluster.

## What is the difference between industry wages and occupation wages?

Industry wages and occupation wages are estimated via separate data sets, often the time periods being reported do not align, and wages are defined slightly differently in the two systems (for example, certain bonuses are included in the industry wages but not the occupation wages). It is therefore common that estimates of the average industry wages and average occupation wages in a region do not match exactly.

## What is NAICS?

The North American Industry Classification System (NAICS) is used to classify business establishments according to the type of economic activity. The NAICS Code comprises six levels, from the “all industry” level to the 6-digit level. The first two digits define the top level category, known as the “sector,” which is the level examined in this report.

## What is SOC?

The Standard Occupational Classification system (SOC) is used to classify workers into occupational categories. All workers are classified into one of over 804 occupations according to their occupational definition. To facilitate classification, occupations are combined to form 22 major groups, 95 minor groups, and 452 occupation groups. Each occupation group includes detailed occupations requiring similar job duties, skills, education, or experience.

## About This Report

This report and all data herein were produced by JobsEQ®, a product of Chmura Economics & Analytics. The information contained herein was obtained from sources we believe to be reliable. However, we cannot guarantee its accuracy and completeness.